

# The Temperate Woodland Ecosystem

## Parkhurst Forest Map

**Royal Geographical Society**  
with IBG

Advancing geography  
and geographical learning

© 2017 Ordnance Survey



Source: © 2017 Ordnance Survey

.....

# The Temperate Woodland Ecosystem

## Woodland Map Skills Tasks

.....

1. Name the main road that runs along the southern most edge of Parkhurst Forest

.....

2. Give the four-figure grid reference for the large clearing, found within Parkhurst Forest

.....

3. Give the six-figure grid reference for Signal House, found within Parkhurst Forest

.....

4. How many metres above sea level is Signal House?

.....

5. What is the straight-line distance from the most northerly point in Parkhurst Forest to its most southerly point?

.....

6. What is the shortest distance possible between Parkhurst Forest and the River Medina?

.....

7. What is found in grid square 4789 that may have an impact on the ecology in Parkhurst Forest?

.....

8. If you were to walk from the top of Holme Hill to Camp Hill Prison, what bearing would you have taken?

.....



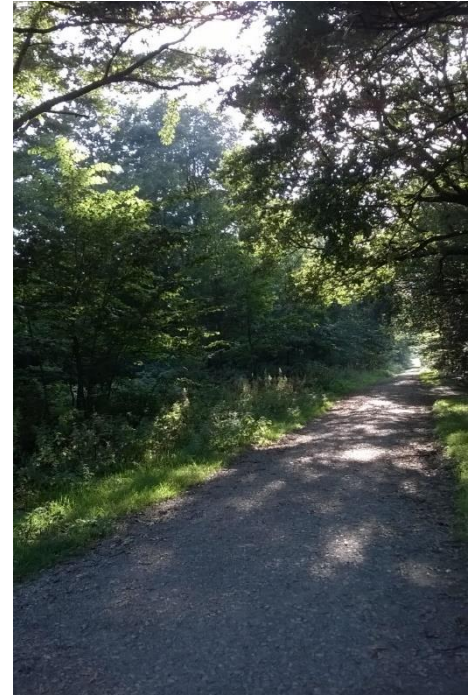
# The Temperate Woodland Ecosystem

## Introduction to Parkhurst Forest

Parkhurst Forest is an area of mixed temperate woodland on the Isle of Wight. The forest is one of the oldest in the UK, with records showing its use as a royal hunting forest in medieval times. The forest is now managed by the Forestry Commission.



Source: Chloe Searl



Source: Chloe Searl

are site, which includes 3 hectares of meadow in the centre of the forest, is unusually wild given its proximity to the centre of Newport, the county town of the Isle of Wight. The forest contains a large Napoleonic oak plantation and several significant areas of pine trees, home to a large proportion of the Island's 3,500 red squirrel population.



Parkhurst Forest also provides a habitat for nationally rare species of butterfly and lichen.

Source: Steve Childs (CC-BY 2.0)



Pearl bordered Fritillary

forest is an important part of the tourism portfolio of the Island, and is well used by islanders and visitors. Vandalism, fires and fly-tipping do occur, but are relatively infrequent given the size and popularity of the forest.

# The Temperate Woodland Ecosystem

## Parkhurst Forest Species

Species	% cover (2005)	% cover (2037)
Oak	32	36
Hazel	0	5
Beech	4	0
Scots and Corsican Pine	32	7
Other broadleaf species	9	30
Other conifer species	19	6
Grassland	0	5
Open space	4	11

Source: Parkhurst Forest Design Plan (2005)

Is this data discrete or continuous?

.....

How might you present this data?

In what ways is this method appropriate?

.....

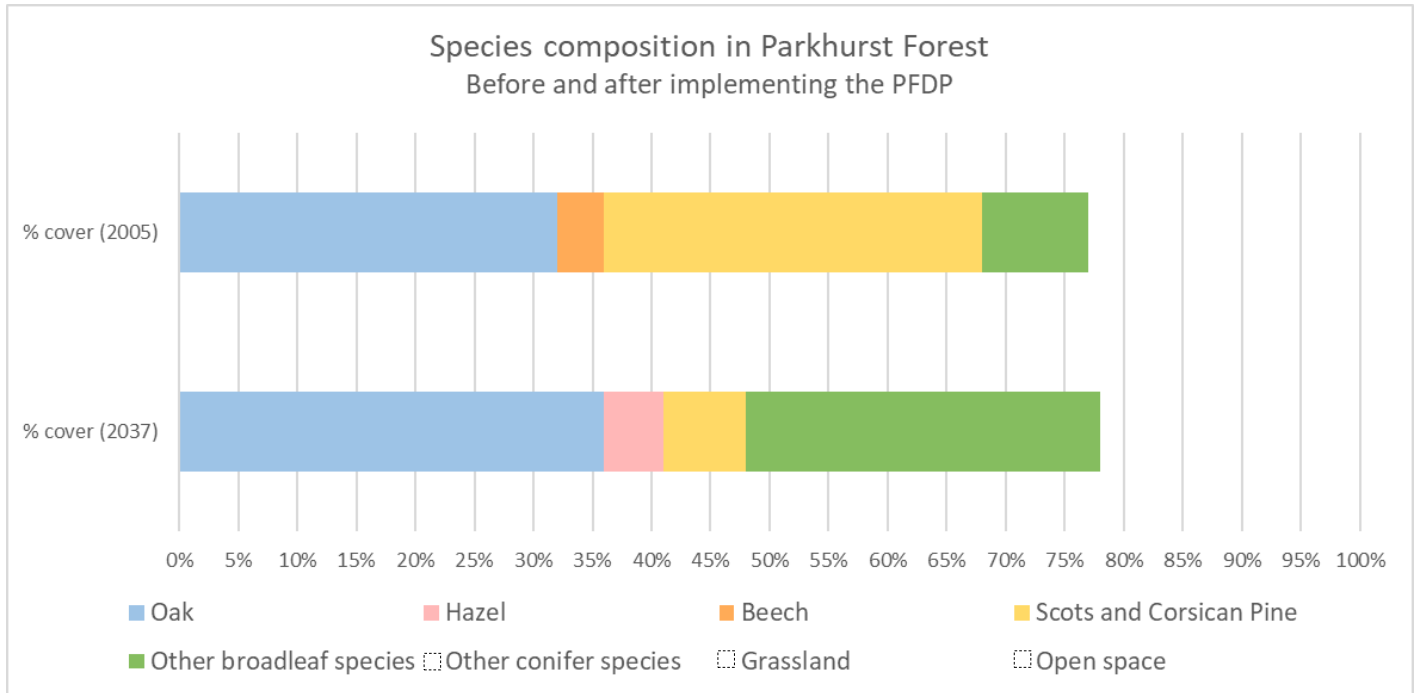
.....

.....

.....

# The Temperate Woodland Ecosystem

## Complete the Graphs



Use the data below to complete the composite bar chart showing species abundance in Parkhurst Forest before and after the implementation of the Parkhurst Forest Design Plan.

Remember to complete the key and check that you have not gone over the 100% line at the end.

Species	% cover (2005)	% cover (2037)
Other conifer species	19	6
Grassland	0	5
Open space	4	11

What does the composite bar graph tell you about the aims of the Parkhurst Forest Design Plan?

.....

.....

.....

# The Temperate Woodland Ecosystem

## Acute Oak Decline Graphs

Think about how species are interdependent within a woodland food web and ecosystem. How might each of the species in the graph change if Acute Oak Decline were found to be present. Draw dotted lines on the graph to show predictions of how the species will increase or decrease.

