

Weddell Sea Ice Shelves

Latitude	Longitude	Ice Shelf Feature
68 degrees South	63 degrees West	
78 degrees South	55 degrees West	
78 degrees South	40 degrees West	
73 degrees South	16 degrees West	

Complete the table with the matching ice -shelf using the latitude and longitude information.

The ice shelves are named here:

Ronne Ice Shelf

Filchner Ice Shelf

Riiser-Larsen Ice Shelf

Larsen C Ice Shelf

Sea Ice Research - Endurance22



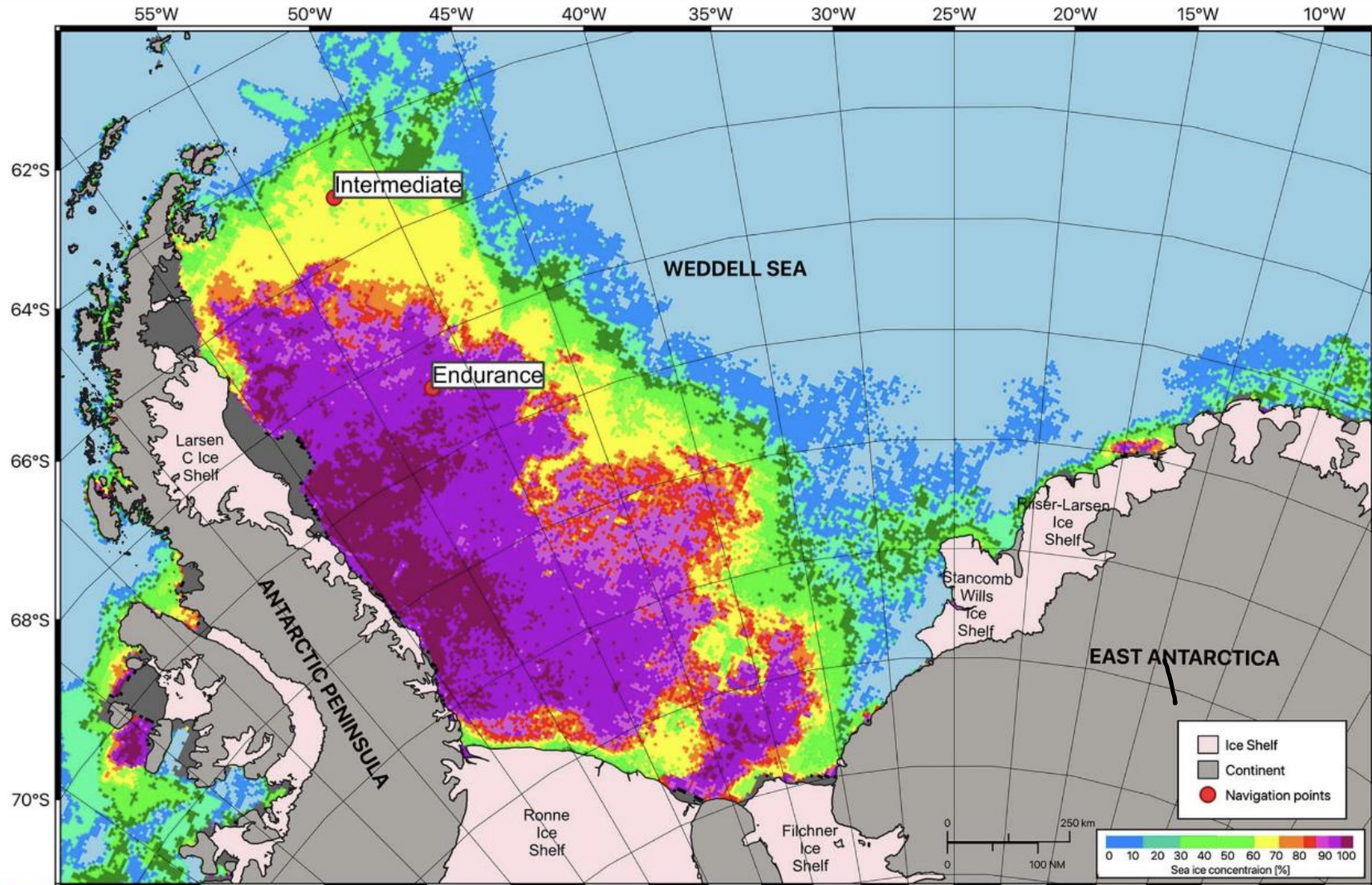
ENDURANCE22

THE EXPEDITION

EXPLORATION

HISTORY

SCIENCE



Map produced by Drift+Noise Polar Services. Historical sea-ice concentration is provided by the IUP group of the University Bremen. Antarctic Coastlines are taken from the SCAR Antarctic Digital Database (ADD) provided by the British Antarctic Survey (BAS).