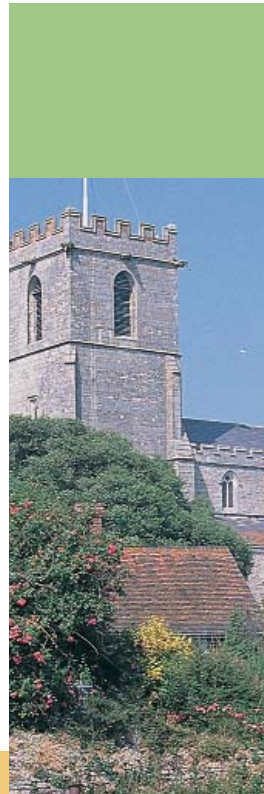


PURBECK
COMMUNITY
PARTNERSHIP

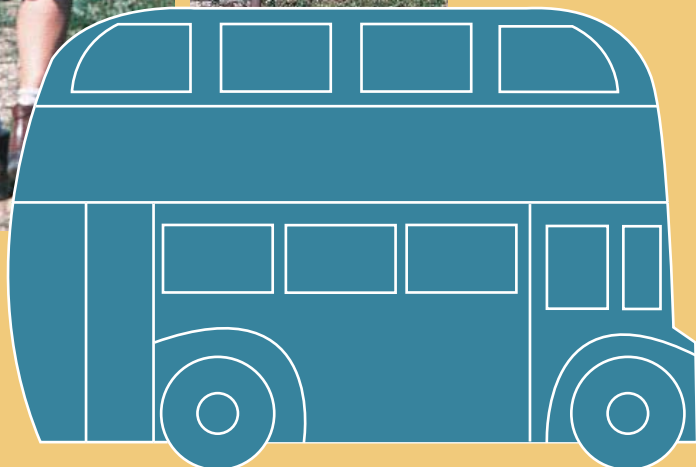
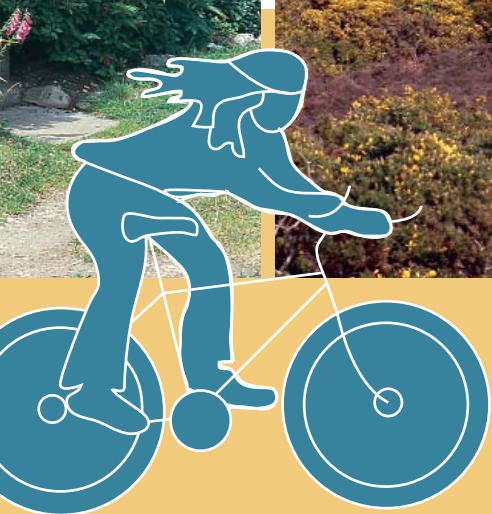


THE community plan FOR PURBECK

April 2006 - March 2009



BE ACTIVE BE HAPPY



The Community Plan for Purbeck- Be Active Be Happy



VISION

'Purbeck should be a place where people are proud to live and our communities can grow and thrive.'

Forward

As the Chair of the Purbeck Community Partnership, I am extremely pleased to present to you a copy of the first Community Plan for Purbeck. Our aim is to help co-ordinate local partners' actions and resources to the agreed priority areas, to tackle and improve those issues that can have a great deal of impact on the quality of life of local communities.

This Community Plan can help attract more investment and funding into Purbeck both in the long and short-term that will support communities and bring wider economic development opportunities.

Over the past two years numerous organisations and individuals have been working together to produce this document that provides a common agreement of the way forward at District level with the Community Planning process.

Visualising a developing Purbeck over the next 15 years is not easy. Based on local consultation and hard data about the District that is available to us now, our focus has been to develop short-term actions plan that will achieve long-term sustainable improvements, which will improve the quality of life within our communities.

This document is just the starting point. Behind this sits another 'working document' containing all of the action plans. These plans will deliver our key five priorities and monitor our performance. Flexibility in the way our partners and communities think and work together will be essential if we are to successfully deliver the aspirations that are emerging through all levels of parish and community planning.

The Purbeck Community Partnership now has the opportunity to drive forward with the priority issues. Some of which present us with complex challenges, some we are addressing in various degrees already through existing strategies but we need to carefully consider how these strategies may need to change in the future.

This Plan will become a key document for all agencies and communities of Purbeck focusing combined effort to maximise the benefits for Purbeck.

*Lt. Col. (Rtd) Christopher Donaghy,
Chairman Purbeck Community Partnership*

Purbeck

CONTENTS

Page No.

Foreward	
The Community Plan for Purbeck - Be Active Be Happy	2
1 Introduction	3
Community - what does it mean to you?	
2 The Purbeck Community Partnership	4
• Be Active Be Happy	5
• Sustainable Communities	5
• Working together	6
• Where does the Purbeck Community Partnership come in?	7
3 What you have told us	8
• Consultation	
5 Key issues for the District	9
• Environment	9
• Economy	11
• Carving a foundation for the Isle of Purbeck	13
• Voluntary and Community Sector	15
4 Key priorities	16
6 Priority themes	17
• Crime Reduction	17
• Affordable Housing	19
• Transport	22
• Healthy Lifestyle	24
• Young People	26
7 Supporting groups	28
• Sports and Recreation	28
• Tourism, Arts and Culture	29
• Cultural Heritage	29
• Older People	29
8 What will happen next?	30
9 Document and website references	31

1. Introduction

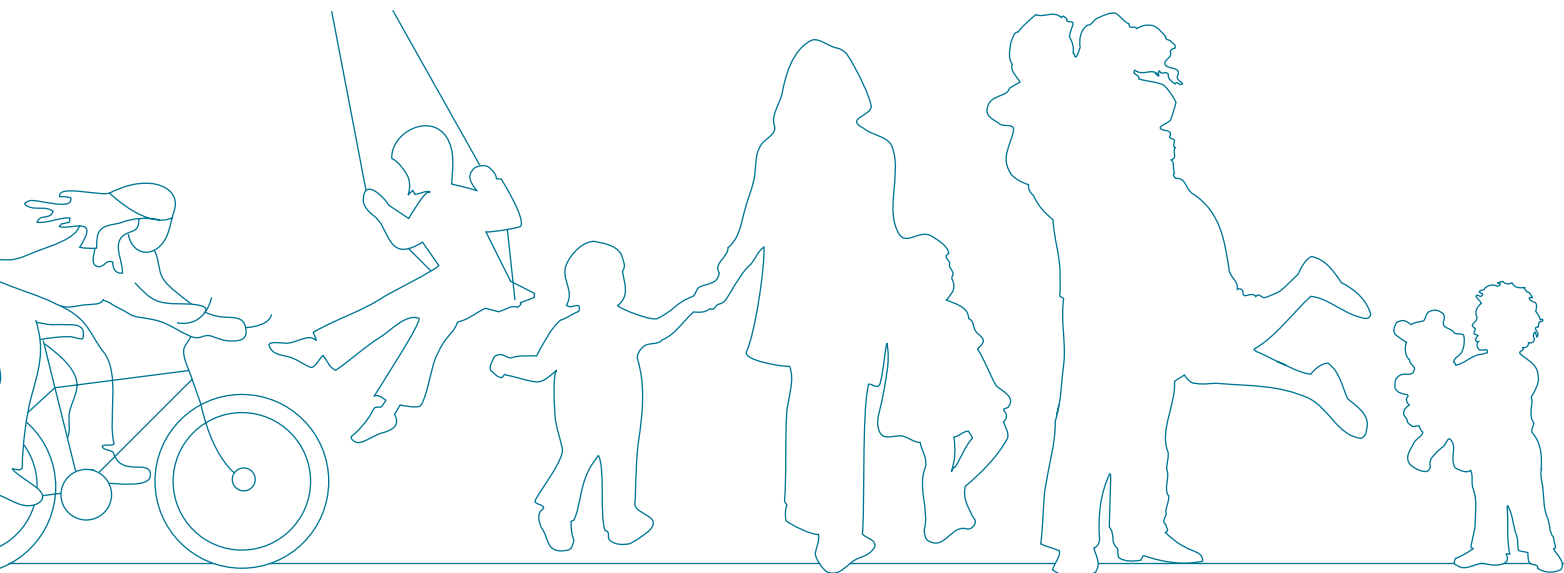
COMMUNITY - WHAT DOES IT MEAN TO YOU?

Some people see the area that they live as a "community". To others it is the people who live within it. We can all play a part in realising our aspirations for the communities that we call home. It is turning ideas into action that will make our communities stronger, happier and more vibrant places in the future.

Purbeck is a small mainly rural District with a population of about 45,000. Swanage, Wareham and Upton are our largest settlements that contain over 53% of the District's population. The District's outstanding environmental quality is reflected in 24% of the area being designated as Sites of Special Scientific Interest. Virtually the entire coastline is a designated World Heritage Site with the southern part of the District being designated an Area of Outstanding Natural Beauty.



Everyone recognises that Purbeck is a very attractive area in which to live, work and spend leisure time, but this also leads to specific problems. The local economy is heavily dependent on tourism, which leads to traffic congestion and environmental damage. The demands placed on our housing market from out of area commuters, second homeowners (5.4% of residential properties are holiday/second homes), retired people and others moving into the area from outside raises the cost of housing for local people. Incomes are low and accessing services is a problem for many residents within our communities. This results in pockets of deprivation in both rural and urban areas. Sustainable development is our greatest challenge and we will work in partnership to ensure our actions today do not compromise the needs of future generations.





2. The Purbeck Community Partnership

The Local Government Act of 2000 placed a duty on Purbeck District Council to prepare a 'Community Strategy' or plan for promoting or improving the economic, social and environmental well being of their areas.

These Plans should focus on four clear objectives:

- Long-term vision that focuses on the outcomes that are to be achieved
- An Action Plan which identifies shorter term priorities and activities
- Shared commitment from the Partnership to implement the Action Plan and
- Monitoring the implementation and delivery of the Action Plan that in turn forms an ongoing review purpose of the Community Plan itself.

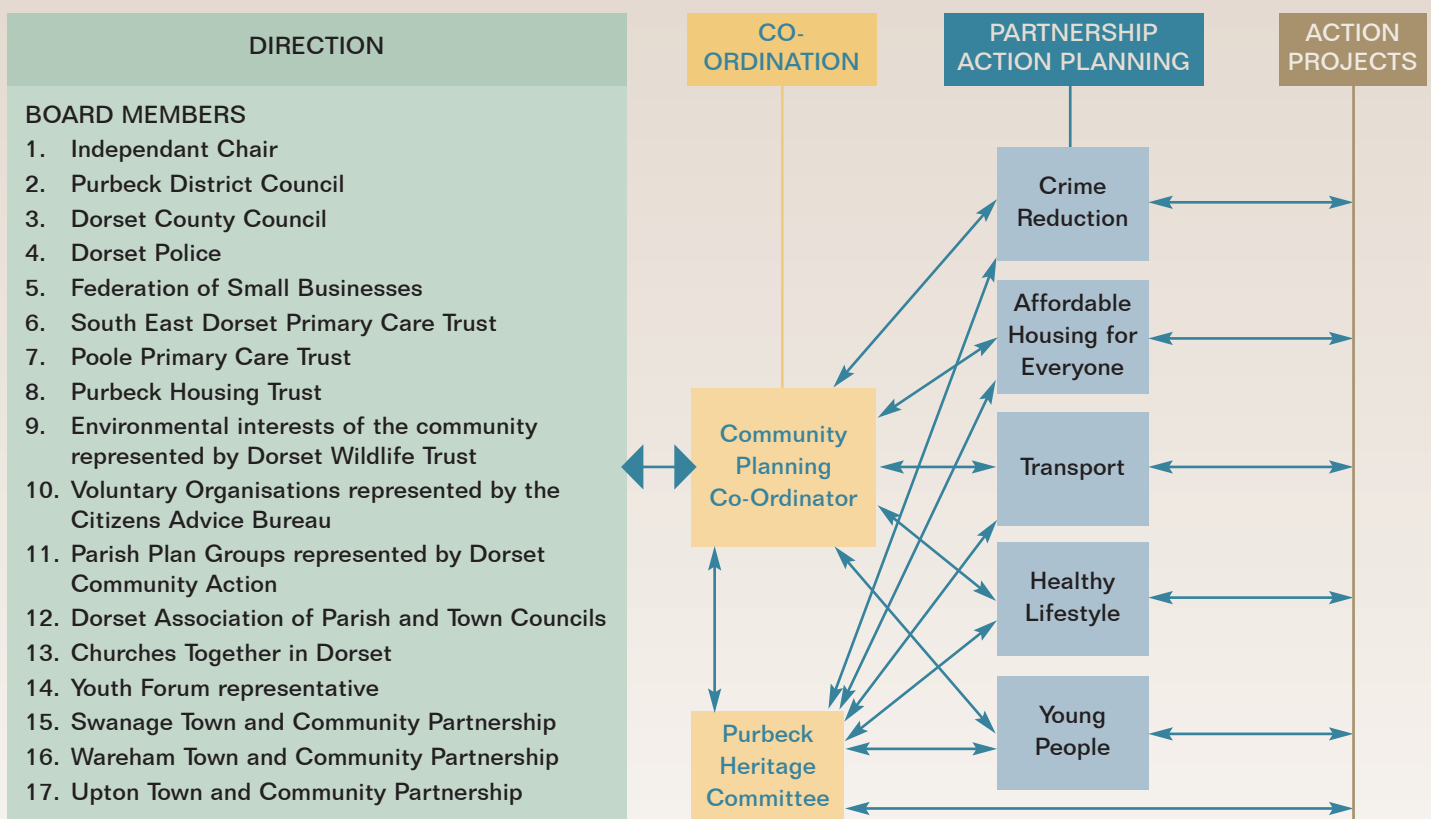
Actions within these plans should be addressed by working in partnership.

The Purbeck Community Partnership (the Partnership) evolved and was launched in March 2003 when representatives from a range of organisations representing social, environmental and economic interests came together to discuss the purposes, priorities, organisation and broad structure of a community partnership and developing a community plan that would deliver the four objectives listed above.

The main aims of the Partnership are:

- To improve the quality of life and to better meet the needs of the people of Purbeck, whilst maintaining the District's environment for future generations.
- To make the most of available resources by involving the public, private, business, voluntary and community sectors in a co-ordinated framework for action and method of joint working and pooling of resources.

Members of the Purbeck Community Partnership Board:



be active
be happy



BE ACTIVE BE HAPPY!

Purbeck Community Partnership is encouraging everyone to Be Active Be Happy by changing their way of life whatever their physical ability.

By becoming more physically, mentally and socially active in your local community or your home environment everyone will benefit in some way. It is recognised that people who are inactive for long periods are more likely to develop a health issue than people who are active. Many people may find joining a club, attending a group or enrolling on a course are good ways of getting out of the home, doing something new and meeting people in a positive and supportive environment. For various reasons some people may find it difficult to leave their homes and rely on the support of others to be able to try or take part in something new in their own environment. If we all adopt more of a 'community spirit' we will achieve vibrant.....



SUSTAINABLE COMMUNITIES

A Community Plan for Purbeck will address social, economic and environmental issues to improve the social structure of our communities, strengthen the local economy and enhance the environment. It is recognised that no single organisation can be responsible on its own for improving the communities where we live, shop, work or visit.

The Plan is building upon the process known as Local Agenda 21 by which partnerships were developed to address key issues in accordance with the principles of sustainable development. This process came to the fore following the 1992 Rio Earth Summit when representatives from around the world were called to sign an agreement known as Agenda 21, an agenda for addressing social, economic and environmental issues in the 21st century. In response to this the strategy, a 'A Sustainable Future for Purbeck' was developed guided by Sustainability South West's sustainable development framework, and it this framework which will be used to embed sustainability into the Community Plan.

The definition of sustainable communities issued by the Office of the Deputy Prime Minister is as follows:

"Sustainable communities are places where people want to live and work, now and in the future. They meet the diverse needs of existing and future residents, are sensitive to their environment, and contribute to a high quality of life. They are safe and inclusive, well planned, built and run, and offer equality of opportunity and good services for all."

Projects evolving from the Community Plan Action Plans will aim to be sustainable in the following ways:

- **Active, inclusive and safe** - fair, tolerant and cohesive with a strong local culture and other shared community activities
- **Well run** - with effective and inclusive participation, representation and leadership
- **Environmentally sensitive** - providing places for people to live that are considerate of the environment
- **Well designed and built** - featuring a quality built and natural environment
- **Well connected** - with good transport services and communication linking people to jobs, schools, health and other services
- **Thriving** - with a flourishing and diverse local economy
- **Well served** - with public, private, community and voluntary services that are appropriate to people's needs and accessible to all
- **Fair for everyone** - including those in other communities, now and in the future.

WORKING TOGETHER

Community planning is all about how we can work better together at all levels. Some issues are relevant to particular communities and are best addressed at that level. Some issues cannot be addressed in isolation and need the support of external organisations and agencies at District and County level. It may be a strategic issue such as transport or health that demands effective partnership working.

Within Purbeck we have a strong network of Parish Plans that address directly the issues within those parishes. Residents have devised action plans and work is well under way to reinvigorate community spirit. These plans will also enable communities to face the challenges that living in a rural area will bring in the future. These plans have gone a long way in providing us with the information on which we need to build the Community Plan for Purbeck on.

If you would like to find out more about Parish and Town Plans and how you can become involved in your area, please contact the Community Projects and Sustainability Officer at Purbeck District Council on 01929 557384.

At County level the Dorset Strategic Partnership has already set out its long-term plan for people and communities in a Community Strategy for Dorset - Working together for Dorset's Communities. It is also in a position to drive forward issues that are of most concern to the people of Dorset at regional and national government levels more effectively.

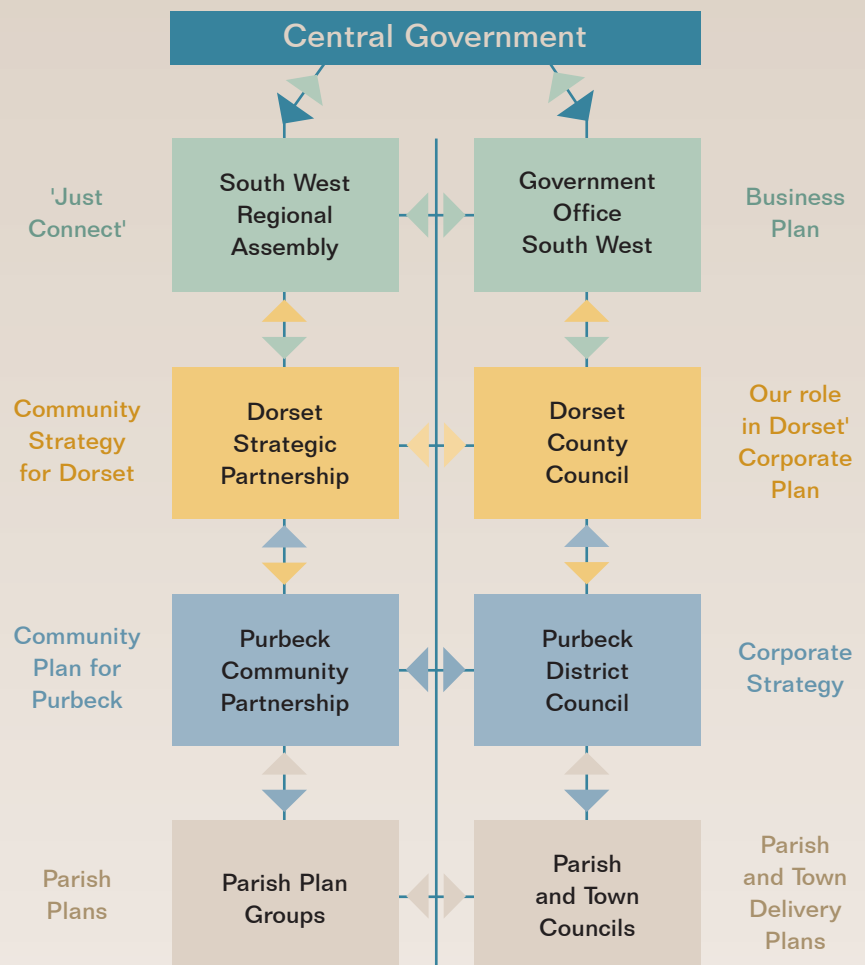
If you would like to find out more about the Community Strategy for Dorset please contact the Dorset Strategic Partnerships Manager at Dorset County Council on 01305 251000.

In September 2004 the Government introduced a new land use planning system. The principal aims of this new system are to make the planning process quicker, and simpler, and to enable the community to become more involved. Under this new system, the recently published Purbeck District Local Plan is being reviewed and replaced by a Local Development Framework. The Local Development Framework will be a key component in delivering the land use planning aspects of the Community Plan and the Town and Parish Plans.

A 'Statement of Community Involvement' (SCI) has been produced which sets out when the community can expect to be involved in the preparation of the Local Development Framework.

For more information please contact the Purbeck District Council Senior Planning Officer on 01929 557264.

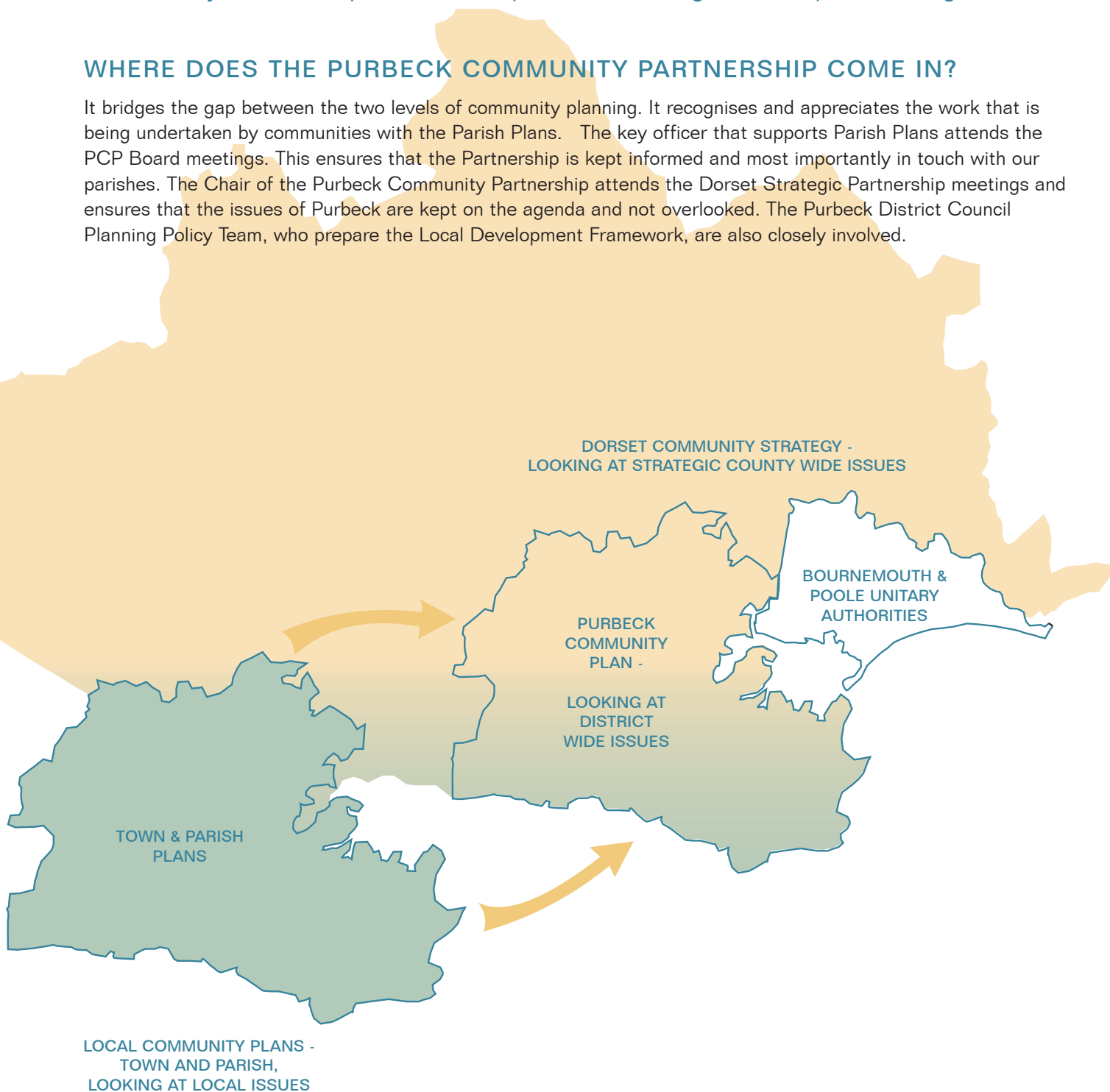
HOW STRATEGIES JOIN TOGETHER



Together we all want the best for the people of Purbeck and through the Purbeck Community Partnership we can keep our issues high on our partners' agendas.

WHERE DOES THE PURBECK COMMUNITY PARTNERSHIP COME IN?

It bridges the gap between the two levels of community planning. It recognises and appreciates the work that is being undertaken by communities with the Parish Plans. The key officer that supports Parish Plans attends the PCP Board meetings. This ensures that the Partnership is kept informed and most importantly in touch with our parishes. The Chair of the Purbeck Community Partnership attends the Dorset Strategic Partnership meetings and ensures that the issues of Purbeck are kept on the agenda and not overlooked. The Purbeck District Council Planning Policy Team, who prepare the Local Development Framework, are also closely involved.





3. What you have told us

CONSULTATION

Community Plans are based on evidence gathered from the community through various consultation methods (including public opinion surveys, use of websites, roadshows, public meetings, focus groups and the use of local newspapers). Many local residents see this as an opportunity to influence the decisions made about the future of their communities. This process then sets out the district-wide vision for the future. The Community Plan aims to provide added value to current ways of working by using resources more cost effectively by working in partnership.

Consultation will help plan and prioritise the Purbeck Community Partnership's objectives and give users what they want, and expect. It helps the Partnership understand the problems facing users and how they can help. It also alerts service providers to problems quickly and allows proactive action.

We began in 2003 by inviting representatives from various individuals and organisations from the public and private sector to take the lead in establishing the first priorities. Over 100 people attended the event. Since then we have used these priorities to ask residents of Purbeck for their opinions and suggestions on how we can continue to make Purbeck a thriving District and a safe place to live in the future. We want to ensure that nobody in Purbeck is excluded from jobs, services or from taking part in everyday activities most of us take for granted.

During 2004 and 2005 a series of roadshows and consultation events were held across the District. This gave residents of all ages the opportunity to come along and meet people who deliver their services. Many offered their suggestions on how we could work together more effectively.

We listened to your comments and from that emerged the issues that concerned you most. We have also used the information within the Town and Parish Plans that have been produced for the District. To complete this consultation process we collated the comments under the key five priorities headings into three statements and asked a sample of Purbeck residents if they agreed or disagreed with the views that we have received. We have included some of your comments in this document.

The Purbeck Community Partnership then took the decision to prioritise further. Focusing on the top three issues under each of the five key priorities; resulting in action plans that are challenging, but realistic in terms of delivery.

The Community Plan for Purbeck is a reflection of what you have told us and what we have learnt from you.



'A Community Plan is a long-term vision for an area. We want the Community Plan for Purbeck to be a living document that is both proactive and reactive to the changing priorities of its residents.'

Steve Mackenzie,
Chief Executive Officer,
Purbeck District Council.