

138429016654



Deep potholes form across East and West Sussex as councils issue statements on repair process

Campaigners have previously warned of a "pothole pandemic" on the roads of Britain

SHARE 1

By [Thomas Fox](#) Senior Reporter

15:56, 4 JAN 2023

Bookmark

▶ See news near you

In YourArea

Enter your postcode

Go



Privacy

Meet Volt, the world's first indoor and outdoor pizza oven.

Ooni Pizza Ovens

But, whilst other motorists may not pose much of a danger to each other, the potholes that must be successfully navigated could. Several of these potholes are especially deep which may damage cars and vehicles, or could be even more dangerous to cycles.

READ MORE: [Full list of Sussex bus routes with new £2 cap on single ticket price](#)

Loading

New And Trusted Beauty Products, Delivered To Your Door, Every Month, At Over 80% Off

Sponsored by OK! Beauty Box

Discover why over **10,000 beauty lovers** across the UK are talking about the monthly **OK! Beauty Box Subscription** that's saving them time, effort and money **every single month**.

[Show Me How To Get These Beauty Products At Over 80% Off →](#)



Such is the state of the road, that when a SussexLive photographer stopped to take pictures, a car suffered a flat tyre after hitting a pothole. Several large potholes are already present on the road with the potential for others to form due to the rough surface and cracks which now plague the road.

Potholes form when water seeps into the soil below a road which, after freezing, expands and pushes the road surface up. Once the ground thaws out, the soil and ground below a road may return to their normal level, whilst the road surface will remain higher, causing a cavity. Once a car drives over the cavity it begins to crack causing potholes in the road.

LOADING

📍 One car suffered a punctured tyre after driving along Malthouse Lane (Image: Martin Burton/SussexLive)

ADVERTISEMENT



The advertisement banner features the Salesforce logo on the left. The main text reads "89% of customers succeed in the first year with Customer 360." To the right of this text is a blue button with the text "Succeed now". Below the main text, there is a small line of text: "Source: 2022 Salesforce Success Metrics Global Highlights. A 2022 study based on 3,706 customer interviews across 20 countries." On the far right of the banner, there is a small illustration of a child's face and a butterfly. At the bottom center of the banner, the number "138266811598" is displayed.

...

In December, temperatures constantly dipped below 0C with roads covered in snow and ice at various points. This likely proved to be ideal conditions for potholes to form on roads, even those which may have appeared to be in good condition beforehand.

It was previously reported that Britain could face a "pothole pandemic" if cuts were made to the road repairs budget. Even without the budget being cut, it would seem the state of the roads has been severely affected by the recent cold weather.

Nutritional Sciences Ltd

Urologist Beggars Brits To "Shrink" Prostate With This Tip (Every Morning)

Solar Your Home

No Joke: This Is How Much Solar Panels Should Really Cost

Sponsored Links by Taboola

The responsibility of repairing potholes lies with the county council's highways department and all potholes can be reported online - repairs are undertaken based on severity and the importance of the road. However, in November last year, it was reported that [West Sussex County Council](#) had paid more than £250,000 over the past four years to motorists whose vehicles were damaged by potholes.

 **Deep potholes, like this one in Sussex, can puncture tyres and ruin a vehicle's suspension** (Image: Sussex News and Pictures)



But this issue is not limited to one country lane in Hurstpierpoint. From [Crawley](#) and Burgess Hill to Crowborough and [Brighton](#), an array of potholes have caused havoc and frustration for motorists.

Responding to the issues, a [West Sussex County Council](#) spokesperson said: "We do understand that potholes are a big source of frustration for all road users and we are always sorry to hear of anyone being injured, or their vehicle damaged, in any circumstances. The county council is responsible for maintaining around 2,500 miles of road: A and B roads are ordinarily inspected monthly, C-class and main distributor roads on a three or six-monthly basis and declassified roads are typically inspected annually.

📍 One pothole in Brighton was measured at 3ft long and 3 inches deep (Image: Sussex News and Pictures)

ADVERTISEMENT

A horizontal banner advertisement for Salesforce. On the left is the Salesforce logo. The main text reads "89% of customers succeed in the first year with Customer 360." Below this, in smaller text, it says "Source: 2022 Salesforce Success Metrics Global Highlights. A 2022 study based on 3,706 customer interviews across 10 countries." On the right, there is a blue button that says "Succeed now" and a small cartoon character holding a globe. The background features a light blue sky with clouds and a butterfly.

138254793220

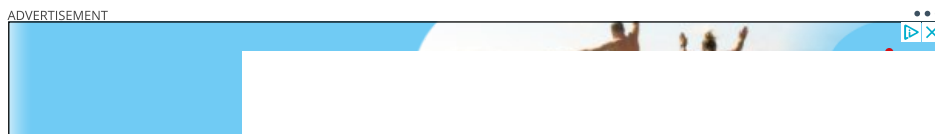
...

"Unfortunately, roads are not permanent structures: they deteriorate over time from constant use, the weight of vehicles using them and the effects of weather, resulting in new potholes. In the six months from April 2022 to October 2022, approximately 22,000 potholes were filled by our Highways teams and contractor.

"But we are also taking a holistic approach to the condition of roads, with larger sections completely resurfaced on a priority basis, to make them more resilient to potholes, and vastly reduce the need for small-scale, disruptive repairs. Other forms of treatment, such as surface dressing and micro-asphalt, are also used to prolong the lifespan of suitable roads.

"From April to October 2022, 138km of road were either completely resurfaced or had surface dressing or micro-asphalt treatments - representing a total investment of £7.4million in road surface improvements county-wide."

 **Some believe potholes have become a more common sight on the roads of Sussex** (Image: Martin Burton/SussexLive)

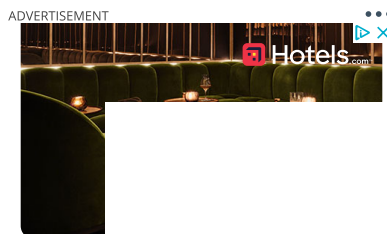


138212091369

Similarly, an East Sussex Highways spokesperson said: "Like every other highways authority in the country, we see an increase in the number of potholes forming on our roads over the winter months. The prolonged periods of extreme wet and cold weather that we have experienced in recent weeks means that potholes that are forming are becoming larger and deeper more quickly than usual.

"To deal with this, we have increased our resources by 50 per cent and our teams are working extended hours and at weekends to keep on top of the situation. Since December 1, we have repaired more than 2,150 potholes across East Sussex. While our highways stewards are working tirelessly to monitor the condition of roads across East Sussex, they have more than 2,000 miles of carriageway to inspect and we would urge residents to report any defects they see to us directly to enable us to react as quickly as possible.

"We prioritise the repair of potholes across the county based, whether identified by the public or from routine safety inspections, on a number of factors including the depth, size and location of the pothole and, where these meet our published safety intervention levels for repair, they are repaired within a specified timeframe. To repair all potholes regardless of whether they are an immediate safety issue or not would require considerably more resources. Potholes and other defects can be reported directly to East Sussex Highways at www.eastsussexhighways.com, where information about when and how we repair potholes can also be found."



Week
spont

138405386249

SIMILAR ARTICLES TO THIS

POWERED BY  mantis



...spontaneous trips

138329043104

If you see a pothole in West Sussex, you can report it by [clicking here](#). If you see a pothole in East Sussex, you can report by [clicking here](#).

Get the latest news from across Sussex delivered straight to your inbox - [find out more here](#).

Read next:

- [Met Office verdict on whether unseasonably hot temperatures will hit Sussex](#)
- [Sussex MP Tim Loughton tells Prince Harry to 'just shut the f*** up' over new interview](#)
- [Sewage released for hundreds of hours at Sussex beaches after hours of continuous rain](#)
- [New travel rules for Gatwick Airport passengers arriving from China due to COVID cases](#)
- [Emergency services respond after car crashes into Co-Op shopfront in Worthing](#)

Follow SussexLive



Comment

Urologist Begg Brits To "Shrink" Prostate With This Tip (Every Morning)

Nutritional Sciences Ltd | Sponsored

No Joke: This Is How Much Solar Panels Should Really Cost

Solar Your Home | Sponsored

Transform Your Living Space With V&CO's Collection Of Rich And Saturated Hues

V&CO | Sponsored

Buy Now